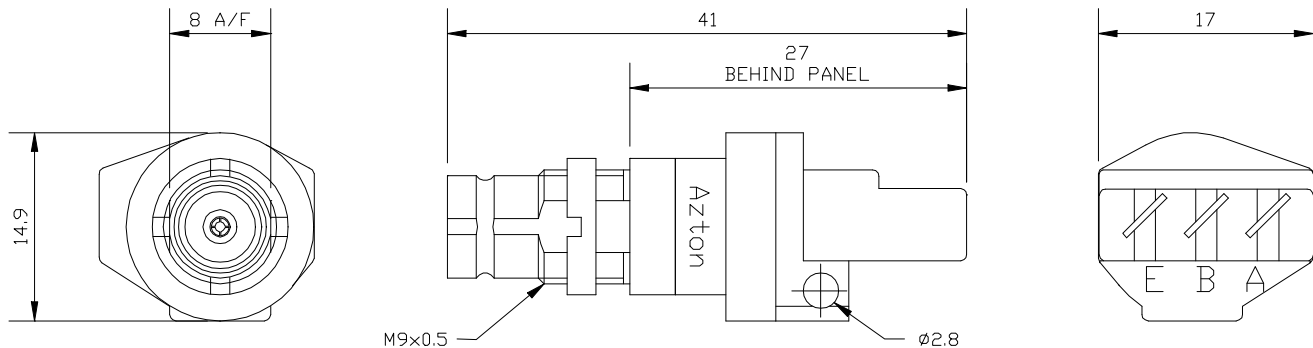


## Balun, 75/120W, 2-8-34Mbit/s 1.6/5.6 (f) Bulkhead to 3 Pole IDC

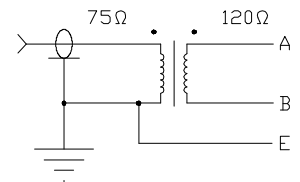


### OPERATING CONDITIONS

Matching Impedance: 75 ohm unbalanced coaxial to 120 ohm balanced twisted pair  
 Bit Rate: 2Mbit/s (E1), 8Mbit/s (E2) and 34Mbit/s (E3) per ITU-T G.703 Line Code  
 Signal Level: 2.37V p-p (2&8Mbit/s), 1V p-p (34Mbit/s) at the coaxial end per G.703  
 Working Temperature: -30°C to 75°C

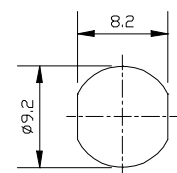
### ELECTRICAL SPECIFICATIONS

Insertion Loss: < 0.35dB from 51kHz to 51.55MHz and in both directions  
 < 0.15dB for 2&8Mbit/s fundamental, < 0.2dB for 34Mbit/s fundamental as per G.703  
 Return Loss: Exceeds G.703 requirements in both directions  
 > 21dB from 51kHz to 102kHz  
 > 26dB from 102kHz to 17.184MHz  
 > 21dB from 17.184MHz to 34.368MHz and  
 > 19dB from 34.368MHz to 51.55MHz  
 Pulse Shape: Exceeds G.703 requirements for 2Mbit/s, 8Mbit/s and 34Mbit/s  
 Cross Talk: > 60dB from 51kHz to 51.55MHz, 2 baluns 20mm apart  
 Isolation Voltage: > 250V DC for 1 minute



### MECHANICAL SPECIFICATIONS

Coaxial Connector: 1.6/5.6 female to IEC 169-13  
 Body: Brass, Plated Cu/Ni5/Au0.8 and Cu/Ni2/Sn5  
 Pin: Beryllium Copper, Plated Cu/Ni5/Au1.25  
 Insulator: Teflon  
 Mating Cycles: 500min  
 IDC Connector: Wire: Conductor Ø 0.4 to 0.65mm, Insulation Ø 0.7 to 1.4mm  
 Contacts: Silver Plated  
 Moulding: Polyester White  
 Mating Cycles: 50min  
 Mouldings: Noryl Black



PUNCH DETAIL

### TERMINATION

IDC: Krone Connection Tool 6089 2 003-00 or 6417 2 055-01  
 Panel Mounting: 1.6/5.6 Tube Spanner